

LINCOLN Diagnostics INC.

MULTI-TEST® PC

PAIN CONTROL



The Multi-Test PC **TOUCH POST** activates nerve cells to inhibit pain.



FITS INTO MULTI-TEST® II EXTRACT WELLS, WHICH ARE DESIGNED TO PREVENT REVERSING DEVICE POSITION.

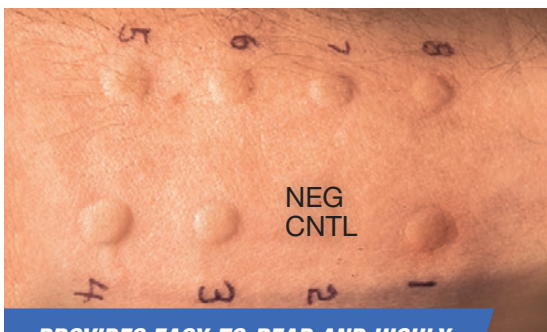


ALLOW TOUCH POSTS TO CONTACT SKIN FOR ONE SECOND AND PRESS LOADED MULTI-TEST PC FIRMLY INTO SKIN AT TEST SITES.



4x magnification

ALL TEST SITES SHOULD SHOW THIS IMPRESSION ON THE SKIN WITH PROPER PRESSURE.



PROVIDES EASY-TO-READ AND HIGHLY REPRODUCIBLE HISTAMINE RESULTS.

When it comes to innovations in allergy skin testing, Lincoln Diagnostics, Inc. leads the way.

Now we've taken the sting out of multiple-site allergy testing with **Multi-Test PC**, which alleviates the pain of skin testing using the neurological gate-control theory. This involves the activation of nerve cells that block pain transmission to suppress pain. Multi-Test PC offers high sensitivity, high specificity, and low variability in results—with virtually no pain.

- Provides well-defined wheals with very little tissue trauma.
- Test multiple allergens with a single disposable device.
- Easy-to-grip Multi-Test PC simplifies testing from start to finish.
- Dipwell Tray and lid protect allergens from contamination.
- Dipwell Trays are stackable for convenient storage.
- Manufactured under ISO 13485 standards and OSHA compliant.
- Made in the USA.



Scan the QR code to access our Multi-Test PC Knowledge Base, which includes published data, videos, updated practice parameters, and additional documentation.

LINCOLN
Diagnostics INC.

The Leader in Allergy
Skin Testing Devices

(800) 537-1336 • 217-877-2531

www.lincolndiagnostics.com

